

INSTRUCTION TO CREATE A TOTE BAG



STAGE 1: MEASURE

Measure 96 cm vertically and
45 cm horizontally

STAGE 2: CUT AND FOLD IN HALF VERTICALLY

fold in half vertically



STAGE 3: MEASURE AND CUT 2 HANDLES

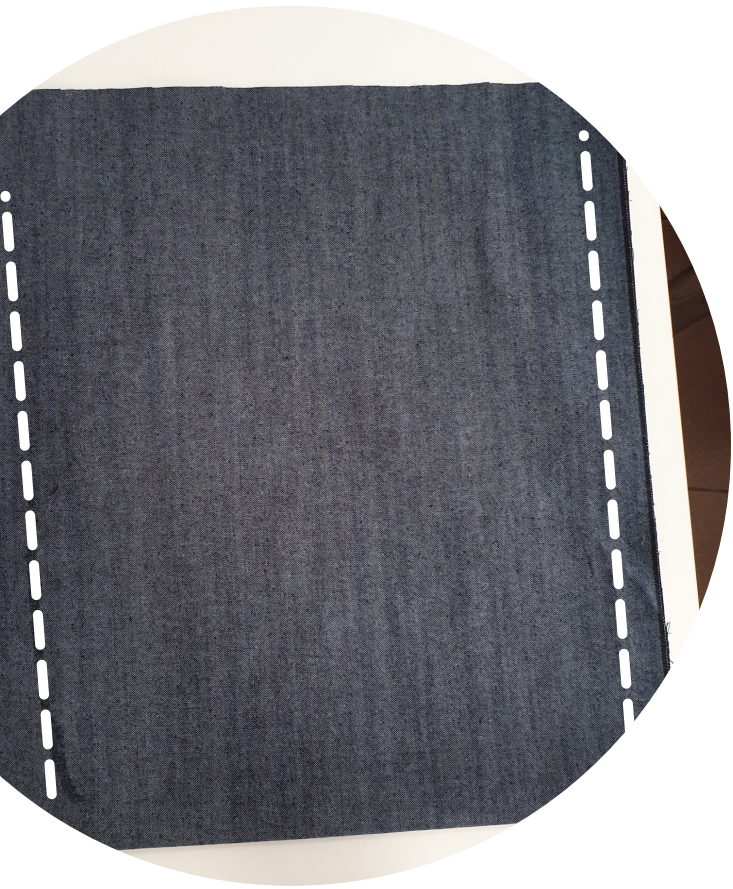
2*(Handle length 88 and 8 cm)

STAGE 4: SEW THE HANDLES

stitch a straight line 2 mm from the edge



INSTRUCTION TO CREATE A TOTE BAG



STAGE 5: SEW THE BAGS BODY

Sew on both sides retreating 1 cm from the edge

STAGE 6: HEM THE TOP EDGES OF THE BAG

Fold the top edge of the fabric down by 1 cm and repeat it. Create a straight stitch 8 mm below the folded edge of the fabricfold



STAGE 7: STITCH THE HANDLES TO THE BAG

Stitch the handles to the bag
reatreating 8 cm from the edge

STAGE 8: IRON YOUR BAG AND ENJOY THE RESULT

